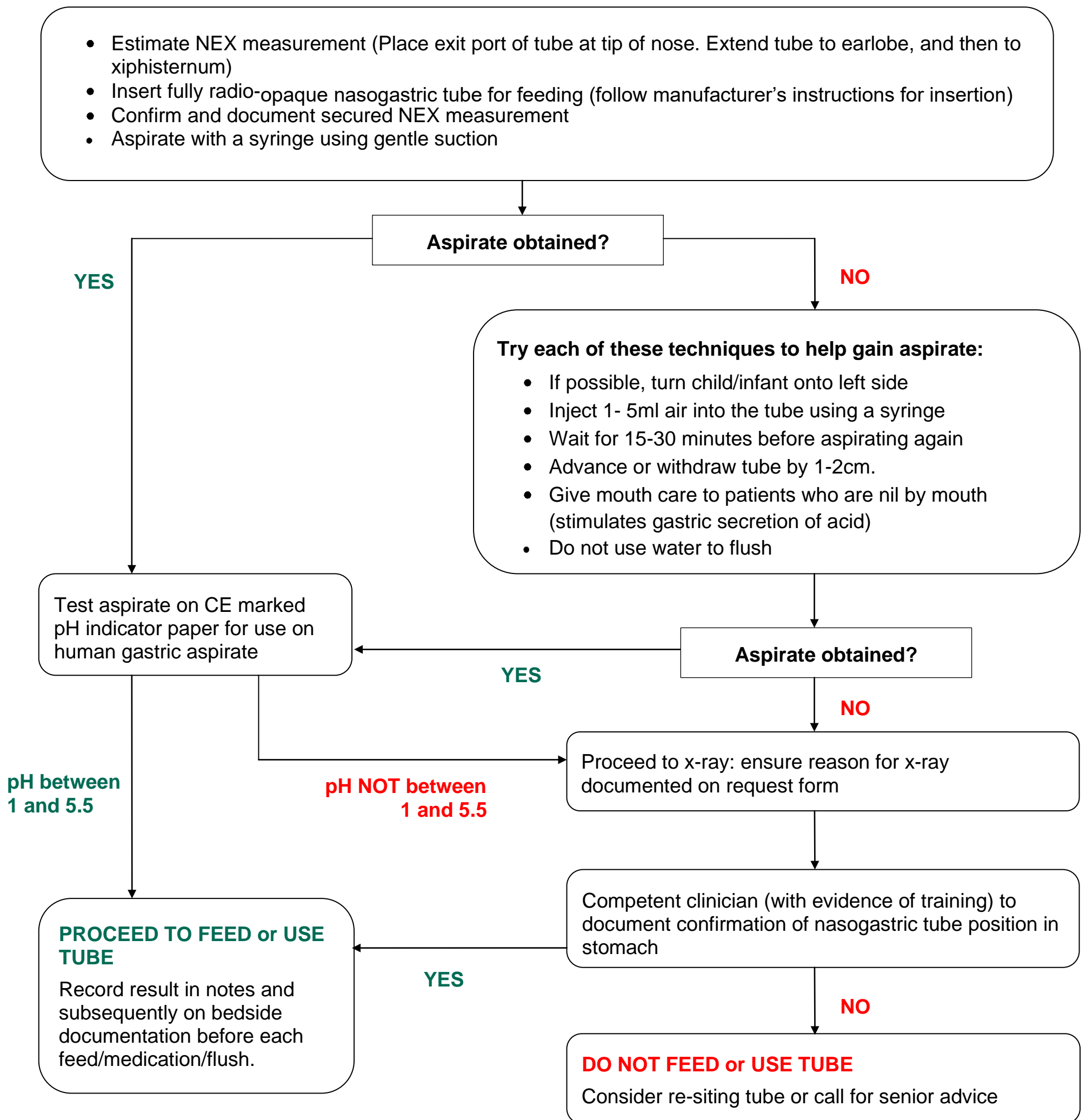


## Decision tree for nasogastric tube placement checks in **CHILDREN** and **INFANTS** (NOT NEONATES)



**A pH of between 1 and 5.5 is reliable confirmation that the tube is not in the lung, however it does not confirm gastric placement as there is a small chance the tube tip may sit in the oesophagus where it carries a higher risk of aspiration. If this is any concern, the patient should proceed to x-ray in order to confirm tube position.**

**Where pH readings fall between 5 and 6 it is recommended that a second competent person checks the reading or retests.**